

## EURO PROFILE DEADBOLT LOCK

SUS 304 Forend, Strike Plate & Dead Bolt

Finish: SSS

PVD

Distance: 72 mm

Forend plate type: Square

2-Turn Dead Bolt

Suitable for Entrance or Store Room Doors

Certification: CE EN 12209 / DIN 18251

EN 1634: 240 Mins Fire Rated

EN 1670: 240 Hours NSS Corrosion Resistance

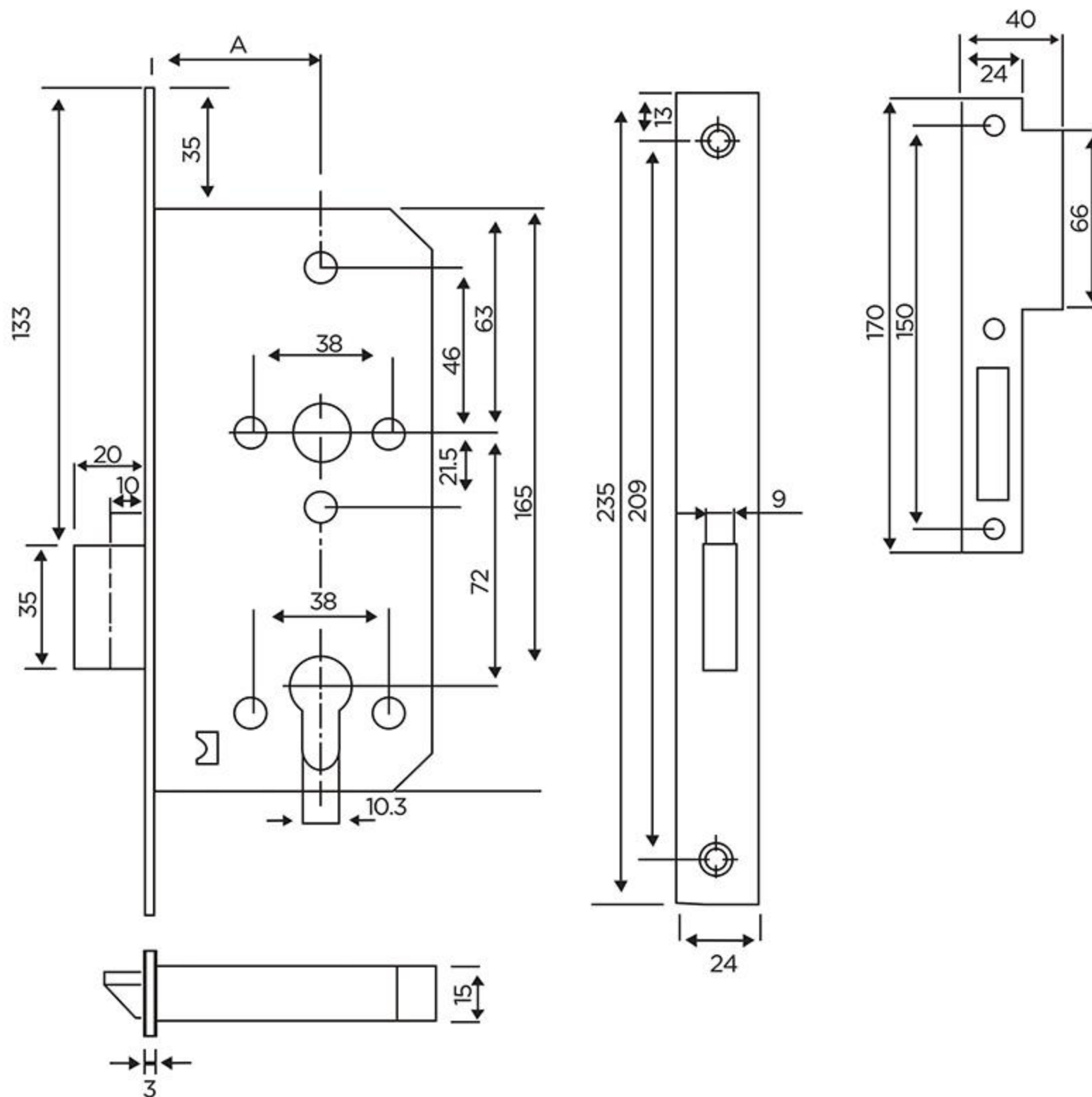


Item Code	Backset Size (A) mm
DTML013-5572	55 mm
DTML013-6072	60 mm



### CE CLASSIFICATION

**3 X 9 1 0 G 3 B C 0 0**



APPLICABLE FOR DOORS | WOODEN DOORS | METAL DOORS | FIRE DOORS | SMOKE DOORS | SWING DOORS