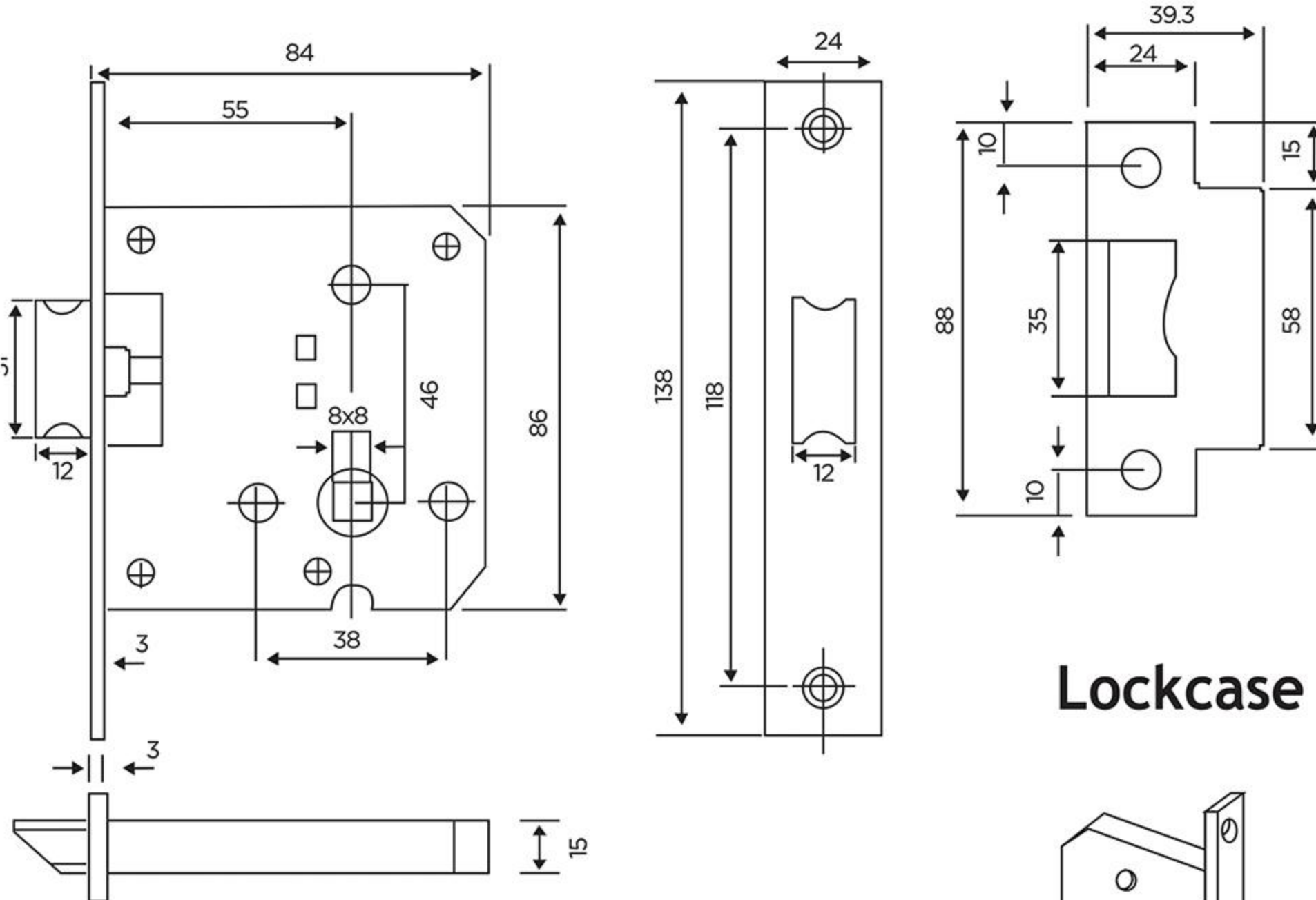
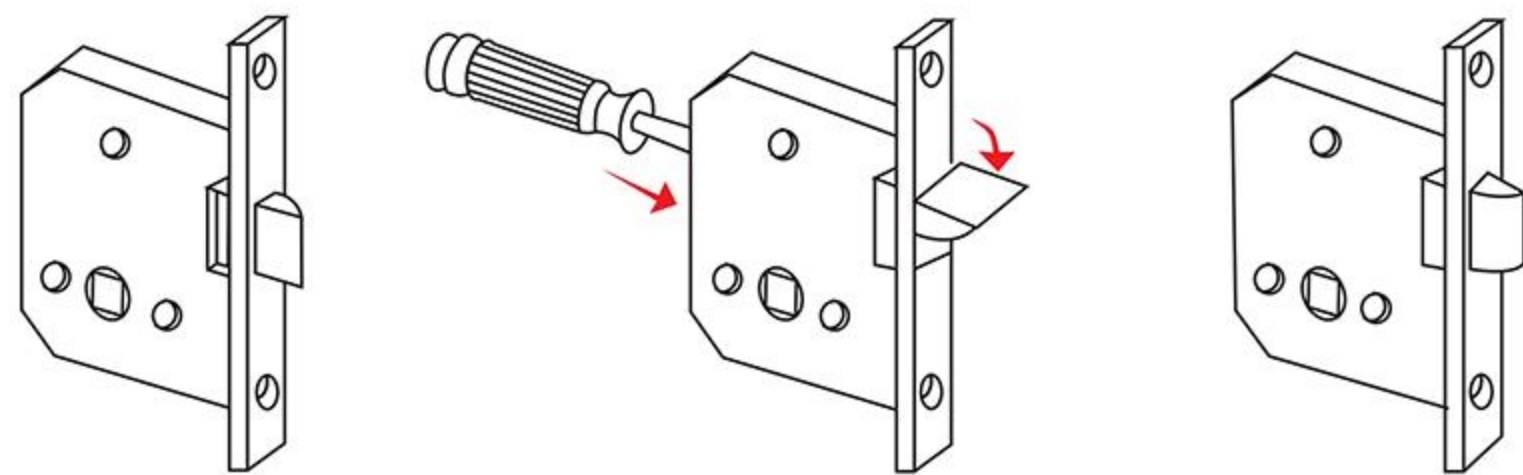


LATCH BOLT LOCK DTML029

SUS 304 Forend, Strike Plate, Follower & Latch Bolt
Finish: SSS
PVD
Backset: 55 mm
Forend plate type: Square
Suitable for Passage Doors



Lockcase Reversible Direction



APPLICABLE FOR DOORS WOODEN DOORS | METAL DOORS | SWING DOORS